

MATTHEW 25



ANNUAL REPORT

FISCAL YEAR 2016-2017

Friends of Matthew 25,

Once again the Lord has showered his blessings on Matthew 25 as we continue to proceed according to his commands of serving the least of our brothers and sisters. Our newly built education center is up and fully functional offering classes in pre-diabetes, diabetes, nutrition and smoking cessation. As a result of the newly added space, we are helping those needing counseling services and also now working with those in need of physical therapy.

Love
Compassion

To the thousands that support the clinic with their gifts of time and treasure, a heartfelt thank you from the thousands of people served here who would have no medical or dental help available to them. As always we would welcome you to come to the clinic and see firsthand the ministry of Matthew 25.

Give
Grow
Serve

- Mark Dixon, CEO

Special thanks to our foundational supporters, the Lutheran Foundation, St. Joseph Community Health Foundation, Parkview Health, Lutheran Health Network and PHP Foundation.



Education
Patient

Health
Learning
Volunteer



EXPENSE

\$14,175	Optical Services
\$32,694	Fundraising
\$46,375	Occupancy
\$65,562	Dental & Lab Equipment
\$76,642	General Administrative
\$137,756	Medications. Supplies & Screenings
\$1,432,861	Healthcare Providers

\$1,806,065	TOTAL
--------------------	--------------

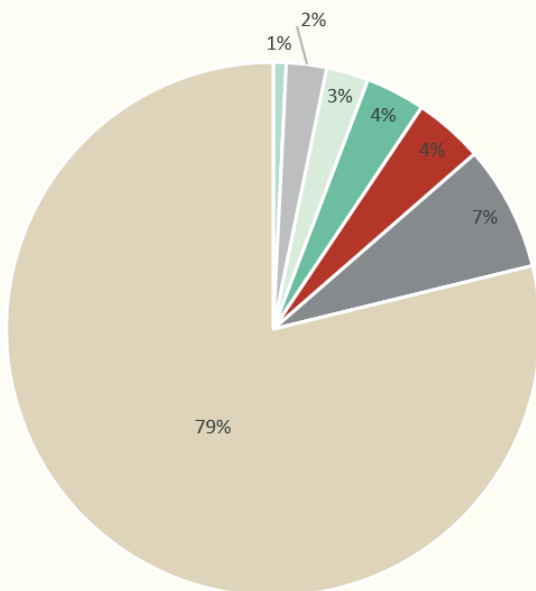
Total Net Assets \$6,570,187

REVENUE

\$15,702	Churches
\$21,454	Memorials & Honorariums
\$43,101	Organizations & Corporations
\$49,440	Endowments & Investments
\$81,674	Other Revenue
\$162,052	General
\$244,635	Fundraising
\$482,500	Hospitals & PHP
\$1,041,015	Foundations

\$2,141,573	TOTAL
--------------------	--------------

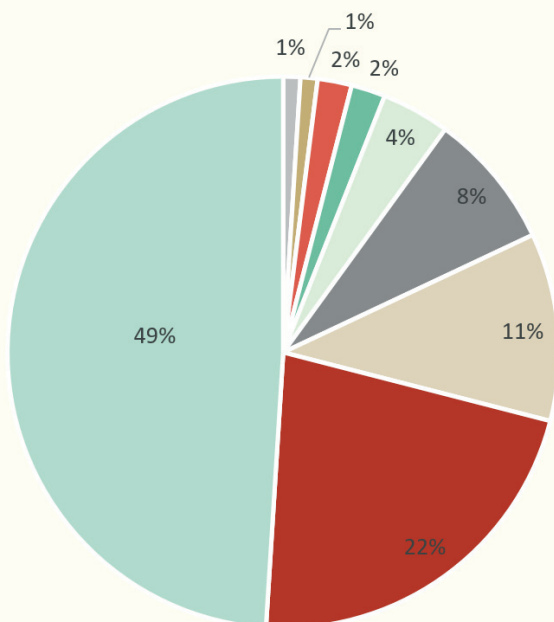
Expense



- Optical Services
- Fundraising
- Occupancy
- Dental & Lab Equipment
- General & Administrative
- Medications, Supplies & Screenings
- Healthcare Providers

Revenue

- Churches
- Memorials & Honorariums
- Organizations & Corporations
- Endowments & Investments
- Other
- General
- Fundraising
- Hospitals & PHP
- Foundations





OPEN

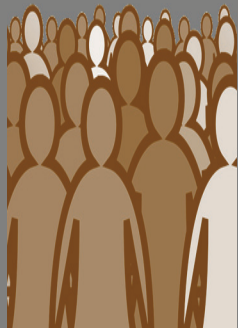
48hrs
per week



32
STAFF

507

VOLUNTEERS



40,000⁺ donated hours

\$ \$ \$5.7⁺
donated
meds &
supplies
MILLION

27⁺ K
patient
visits



BOARD MEMBERS

Dan Garman
Chairman

Wallace Wetherill
Treasurer

Mary Lewis
Secretary

Dennis Becker

Thomas Gutwein, MD

John Berghoff

Maria Kurtz

Bob Dettmer, MD (Emeritus)

Mike Mastrangelo, MD
(Emeritus)

Jeremy Faux

Jeff Radke

Allyson Feasel, DDS

Aaron Schaffer

Mark Franke

Wil Smith

Elizabeth A. Frederick

Mindy Waldron

Dominic Freiburger

Jim Frey, DDS (Emeritus)

James C. Wehrenberg, MD



ADMINISTRATION

Mark Dixon
CEO

Bradley Isbister, MD
Medical Director

Ermina Mustedanagic
Director of Operations

Roger Valliere, DDS
Dental Director

MATTHEW 25

Health & Dental Clinic

**413 E Jefferson Blvd
Fort Wayne, IN 46802
260-426-3250**



www.matthew25online.org



MISSION

We are inspired by the Gospel to provide free primary healthcare services to uninsured, low-income residents of Northeast Indiana and Northwest Ohio.